



U2C Project Update

Jacksonville Transportation Authority

November, 2018



U²C Overview

U²C = Ultimate Urban Circulator

www.u2cjax.com

YouTube:



U2C Skyway Video

JTAFLA • 4.4K views • 11 months ago



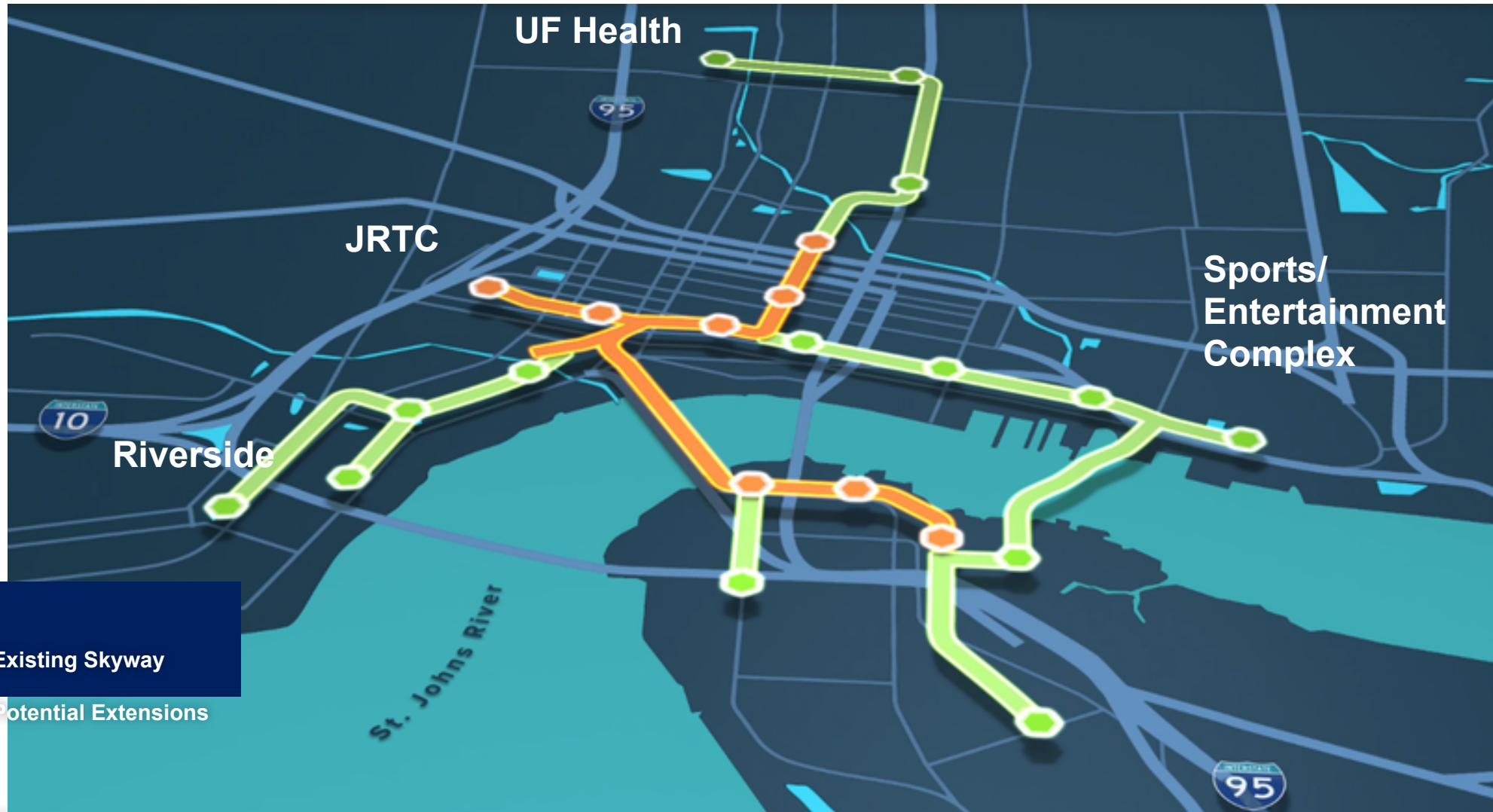
2018 JTA State of the Authority - Vision for the Future

JTAFLA • 363 views • 4 months ago

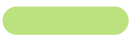
This video represents JTA vision for the future. Watch and find out where Jacksonville will be in 2, 5, or 10 years ...



U²C SYSTEM PLAN



LEGEND

-  Existing Skyway
-  Potential Extensions

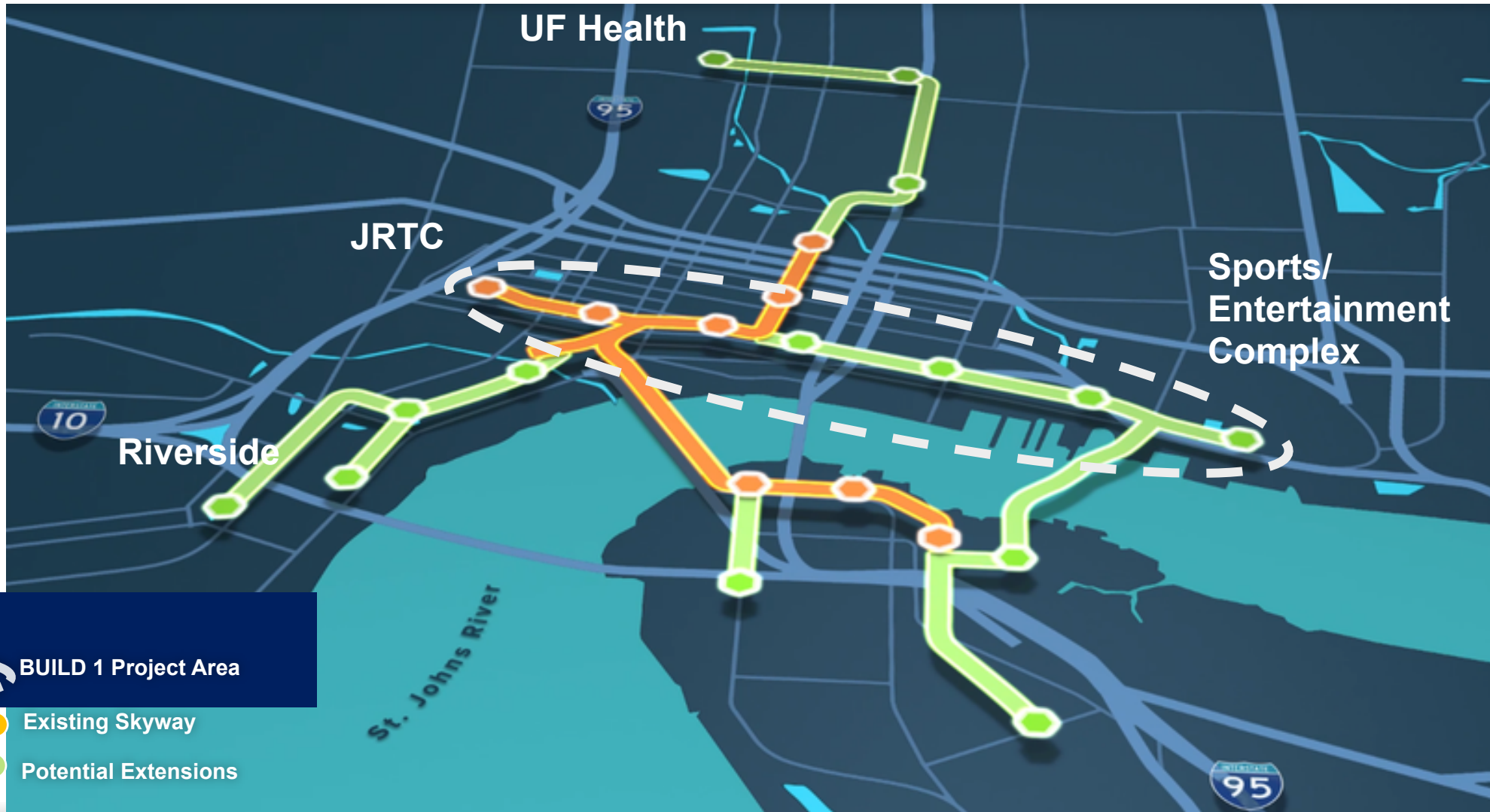


PROJECT HIGHLIGHTS


- » 10 miles of Route coverage (20 miles of “track lanes”)
- » 100 vehicles
- » 2-3 minute headways
- » “On Demand” upgrades
- » Mixed Traffic, Dedicated Lanes, Elevated Lanes
- » Permanent Vehicle Stops
- » TOD
- » Private Investment



PROPOSED U²C BUILD 1 PROJECT



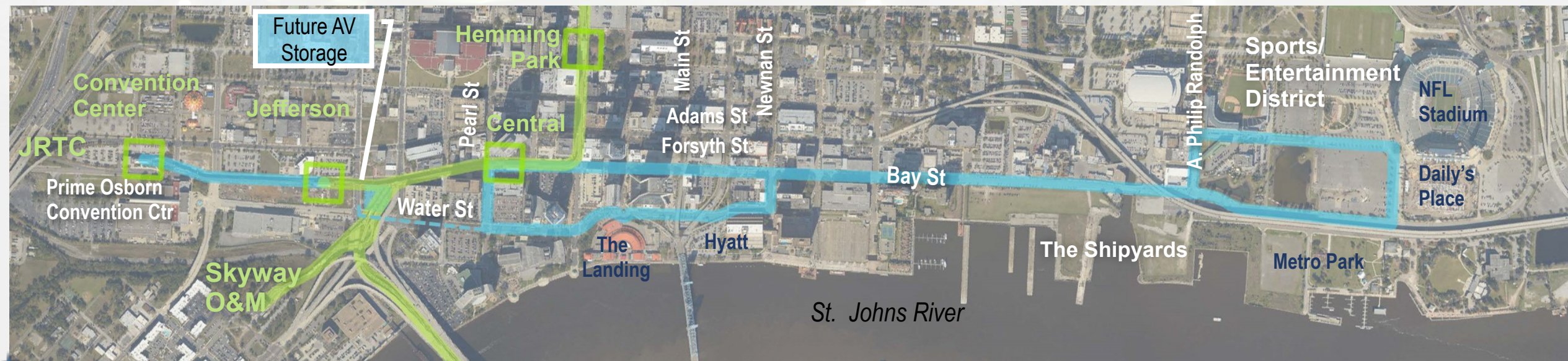
LEGEND

-  BUILD 1 Project Area
-  Existing Skyway
-  Potential Extensions



FIRST PROJECT BUILD – “BUILD 1”

Creating approximately 3 miles of elevated and at-grade service along Bay Street from the Jacksonville Regional Transportation Center (JRTC) east to the Sports Complex near TIAA Bank Field



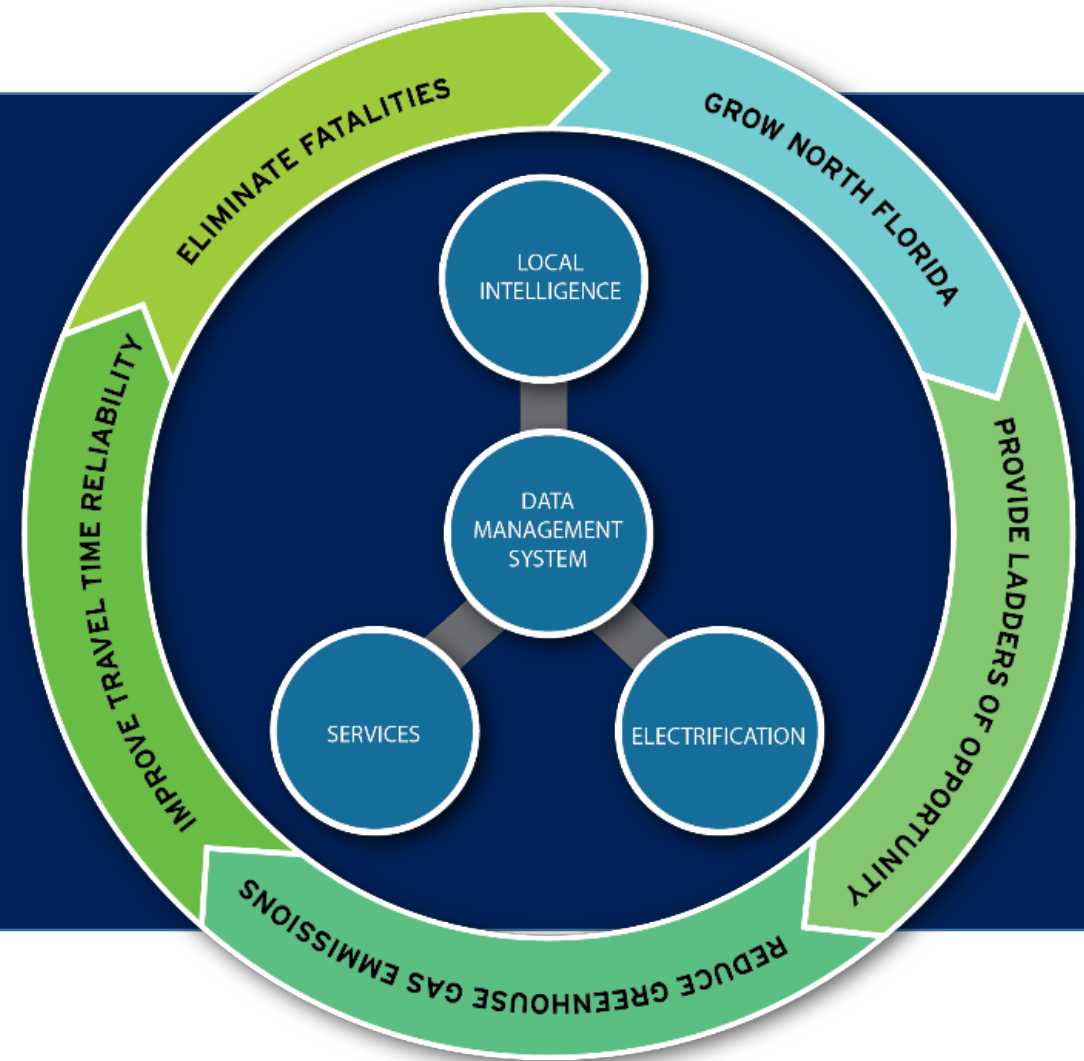
Partnership with JTA, City of Jacksonville, Jacksonville Chamber of Commerce, North Florida TPO



PROJECT COMPONENTS

SMART CORRIDOR TECHNOLOGY

- ★ Dynamic Signals
- ★ Connected Intersections
- ★ Integrated Data Exchange
- ★ Pedestrian Sensors
- ★ Flood Warning Sensors
- ★ Power Consumption Reduction



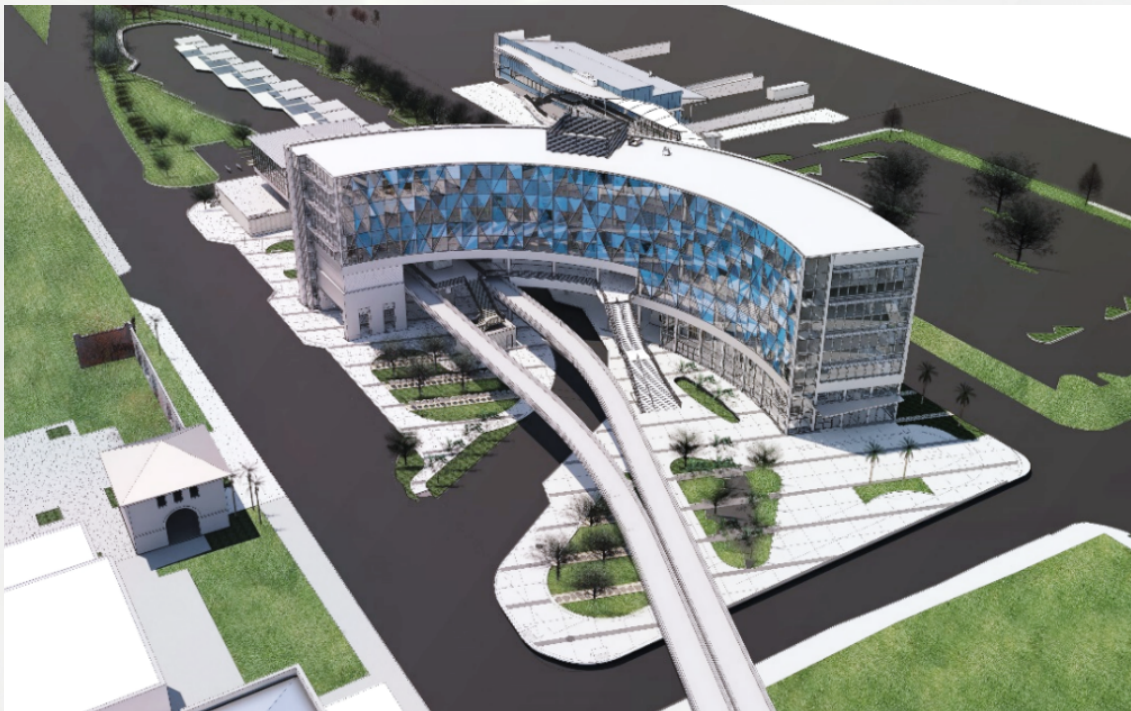
ELEVATED CONVERSION

West segment of proposed project



ELEVATED CONVERSION

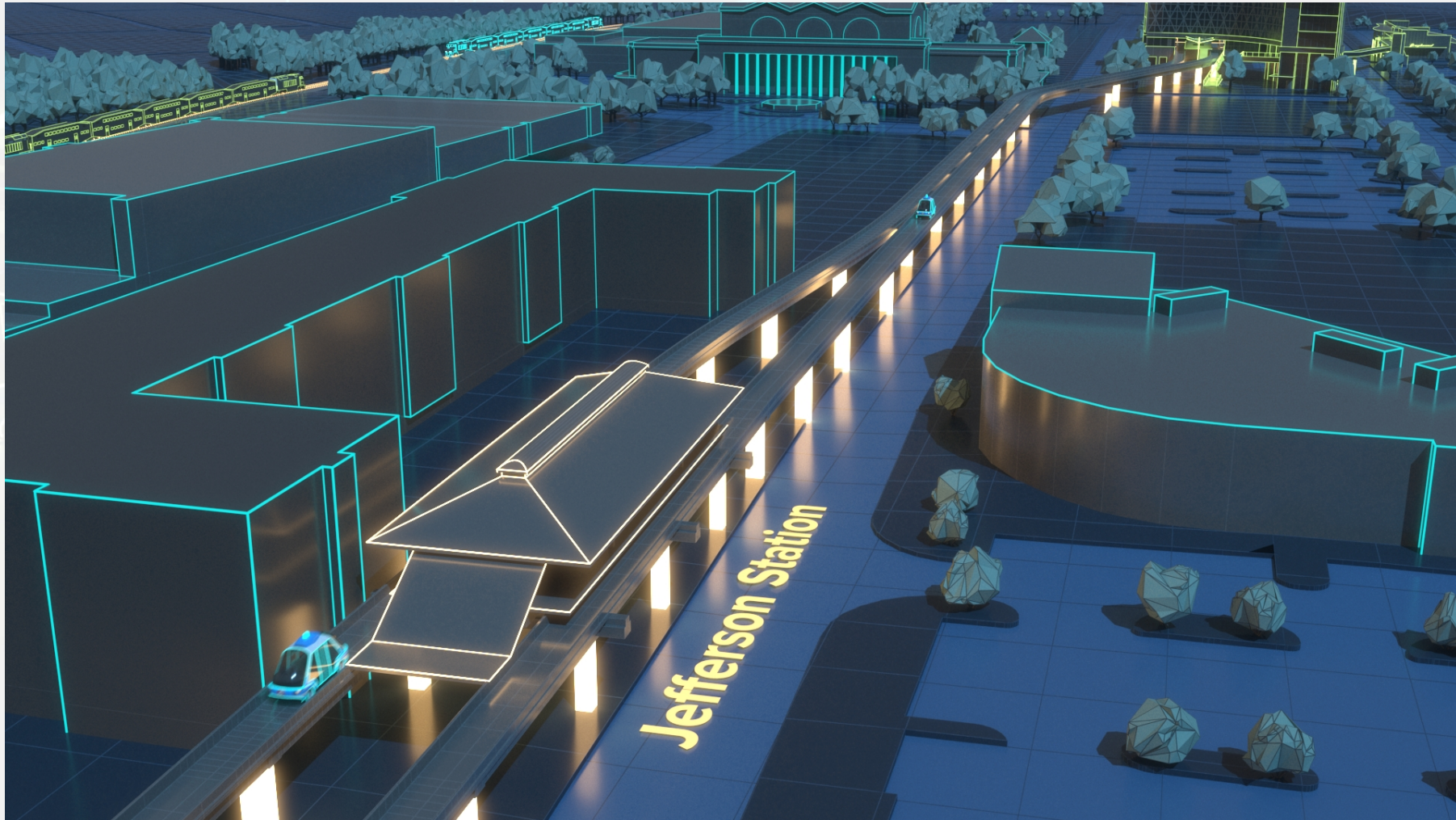
Conversion of the existing elevated people mover infrastructure from the JRTC to Jefferson Station to accommodate autonomous shuttles



Rendering of Jacksonville Regional Transportation Center



CONVERTED AERIAL STRUCTURE



CONNECTIVITY TO CBD & ENTERTAINMENT



*Middle
segment of
proposed
project*



CONNECTIVITY TO SPORTS COMPLEX



East segment of proposed project

Example of Bay Street



PROJECT COMPONENTS



INFRASTRUCTURE

- ✦ 3 miles of Elevated and At-grade Service
- ✦ Multiple Roadway Surfaces
- ✦ Photo Voltaic Roadway
- ✦ Pedestrian Walkway

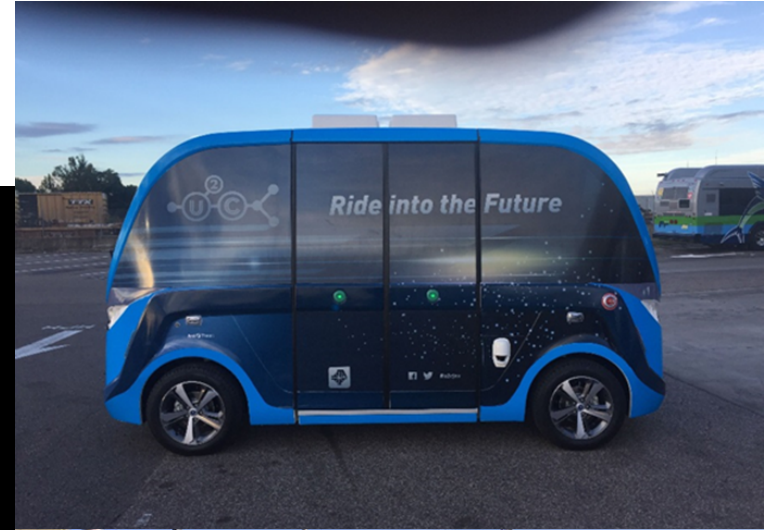
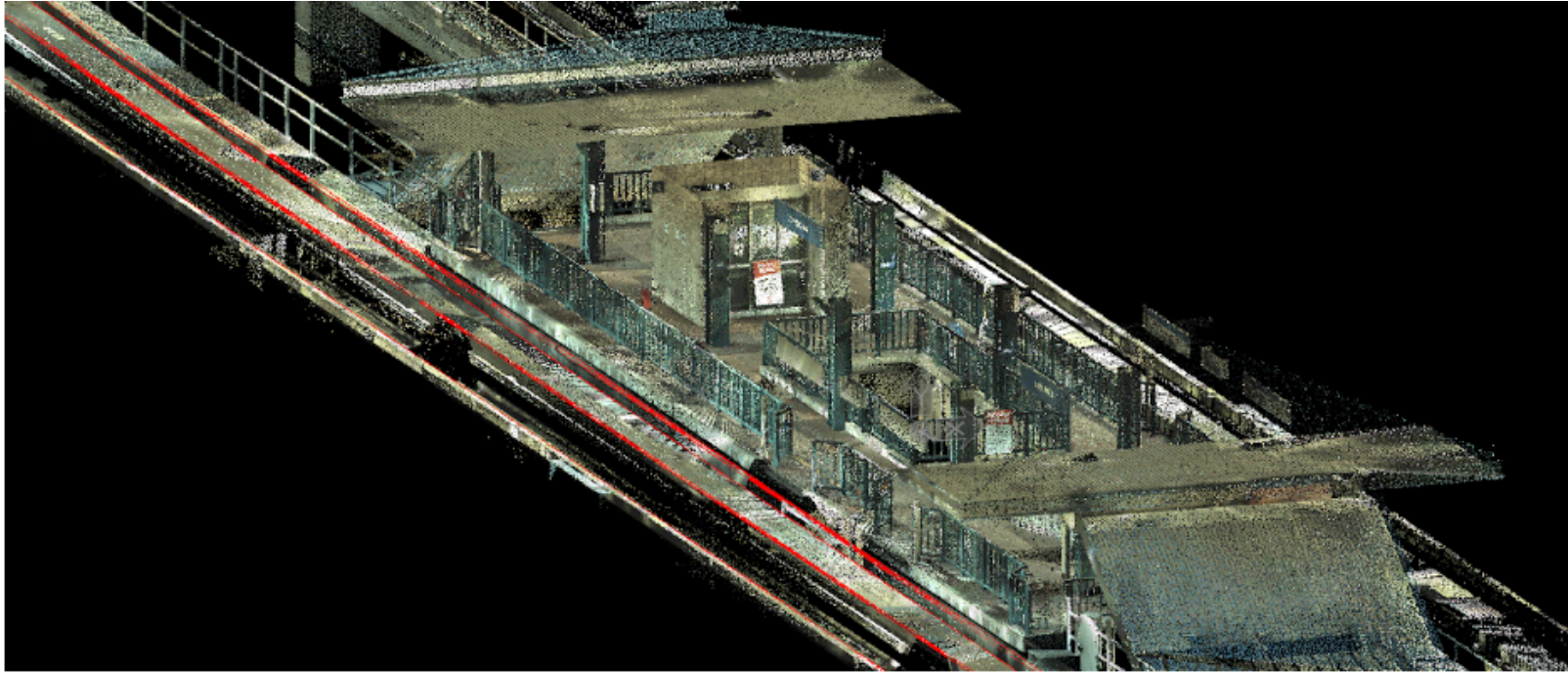
VEHICLES

- ✦ 12 Autonomous Vehicles
- ✦ 2 minute Vehicle Headway
- ✦ Vehicle Charging Stations
- ✦ Supervisory Control System
- ✦ Vehicle-to-Infrastructure (V2I) Communications

CURRENT HAPPENINGS



CURRENT HAPPENINGS



SELECT U²C TECHNICAL AREAS

- » Connected Vehicles
- » Cybersecurity
- » Supervisory System Business Requirements



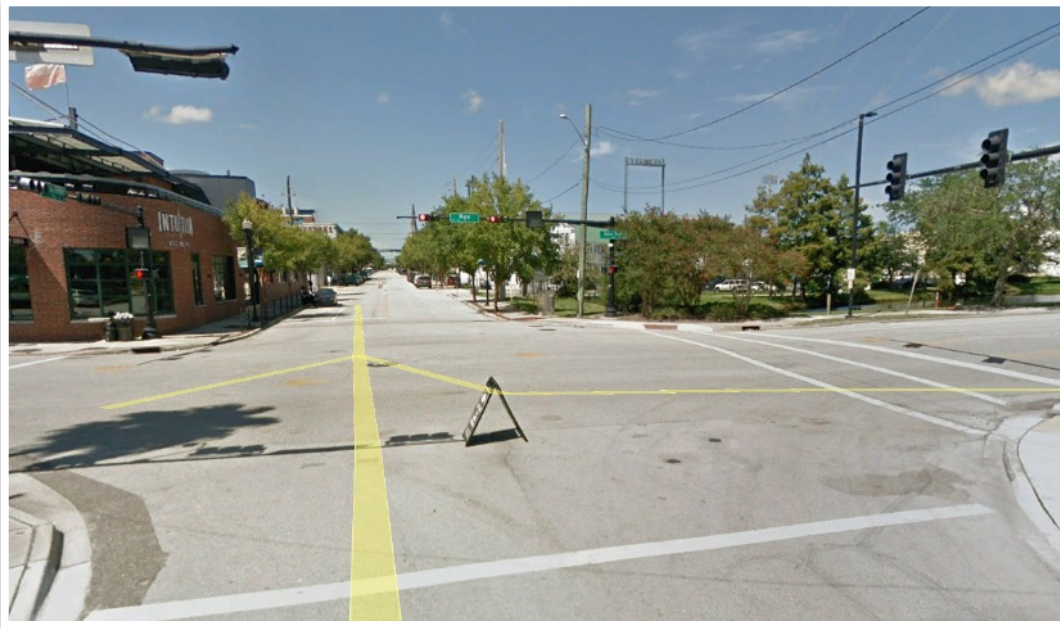
CONNECTED VEHICLES

Needed for AVs:

- » Cross intersections
- » Travel in traffic



U²C SUPERVISORY SOFTWARE SYSTEM



Gator Bowl Blvd. & A. Phillip Randolph St.



CONNECTED VEHICLES: TECHNICAL CONSIDERATIONS



```

{"spatemReceiveList":[{"receivets":1538432561,"id":2226,"message":{"header":{"protocolVersion":1,"messageID":4,"stationID":2226},"spat":{"intersections":{"id":
{"id":2226,"region":3,"revision":0,"timeStamp":43614,"status":
{"manualControlIsEnabled":0,"stopTimeIsActivated":0,"failureFlash":0,"preemptIsActive":0,"transitSignalPriorityIsActive":0,"fixedTimeOperation":0,"trafficDependentOperation":0,
standbyOperation":0,"failureMode":0,"off":0,"recentMAPmessageUpdate":0,"recentChangeInMAPAssignedLanesIDsUsed":0,"noValidMAPisAvailableAtThisTime":0,"noValidSPATisAvailableAtThi
sTime":0},"states":[{"signalGroup":1,"state_time_speed":{"eventState":3,"timing":{"minEndTime":9014}}}, {"signalGroup":2,"state_time_speed":{"eventState":6,"timing":
{"minEndTime":8859}}}, {"signalGroup":3,"state_time_speed":{"eventState":3,"timing":{"minEndTime":9014}}}, {"signalGroup":4,"state_time_speed":{"eventState":3,"timing":
{"minEndTime":9014}}}, {"signalGroup":5,"state_time_speed":{"eventState":3,"timing":{"minEndTime":9014}}}, {"signalGroup":6,"state_time_speed":{"eventState":6,"timing":
{"minEndTime":8859}}}, {"signalGroup":7,"state_time_speed":{"eventState":3,"timing":{"minEndTime":9014}}}, {"signalGroup":8,"state_time_speed":{"eventState":3,"timing":
{"minEndTime":8859}}}, {"signalGroup":9,"state_time_speed":{"eventState":3,"timing":{"minEndTime":9014}}}, {"signalGroup":10,"state_time_speed":{"eventState":3,"timing":
{"minEndTime":9014}}}, {"signalGroup":11,"state_time_speed":{"eventState":3,"timing":{"minEndTime":9014}}}, {"signalGroup":12,"state_time_speed":{"eventState":3,"timing":
{"minEndTime":9014}}}, {"signalGroup":13,"state_time_speed":{"eventState":3,"timing":{"minEndTime":9014}}}, {"signalGroup":14,"state_time_speed":{"eventState":3,"timing":
{"minEndTime":9014}}}, {"signalGroup":15,"state_time_speed":{"eventState":3,"timing":{"minEndTime":9014}}}, {"signalGroup":16,"state_time_speed":{"eventState":3,"timing":
{"minEndTime":9014}}}}}}}, {"receivets":1538432561,"id":62905,"message":{"header":{"protocolVersion":1,"messageID":4,"stationID":62905},"spat":{"intersections":{"id":
{"id":62905,"region":3,"revision":57,"timeStamp":43658,"status":
{"manualControlIsEnabled":0,"stopTimeIsActivated":0,"failureFlash":0,"preemptIsActive":0,"transitSignalPriorityIsActive":0,"fixedTimeOperation":0,"trafficDependentOperation":0,
standbyOperation":0,"failureMode":0,"off":0,"recentMAPmessageUpdate":0,"recentChangeInMAPAssignedLanesIDsUsed":0,"noValidMAPisAvailableAtThisTime":0,"noValidSPATisAvailableAtThi
sTime":0},"states":[{"signalGroup":1,"state_time_speed":{"eventState":3,"timing":{"minEndTime":9014}}}, {"signalGroup":2,"state_time_speed":{"eventState":6,"timing":
{"minEndTime":9052}}}, {"signalGroup":3,"state_time_speed":{"eventState":3,"timing":{"minEndTime":9014}}}, {"signalGroup":4,"state_time_speed":{"eventState":3,"timing":
{"minEndTime":9014}}}, {"signalGroup":5,"state_time_speed":{"eventState":3,"timing":{"minEndTime":9014}}}, {"signalGroup":6,"state_time_speed":{"eventState":6,"timing":
{"minEndTime":9052}}}, {"signalGroup":7,"state_time_speed":{"eventState":3,"timing":{"minEndTime":9014}}}, {"signalGroup":8,"state_time_speed":{"eventState":3,"timing":
{"minEndTime":8856}}}, {"signalGroup":9,"state_time_speed":{"eventState":3,"timing":{"minEndTime":9014}}}, {"signalGroup":10,"state_time_speed":{"eventState":3,"timing":
{"minEndTime":9014}}}, {"signalGroup":11,"state_time_speed":{"eventState":3,"timing":{"minEndTime":9014}}}, {"signalGroup":12,"state_time_speed":{"eventState":3,"timing":
{"minEndTime":9014}}}, {"signalGroup":13,"state_time_speed":{"eventState":3,"timing":{"minEndTime":9014}}}, {"signalGroup":14,"state_time_speed":{"eventState":3,"timing":
{"minEndTime":9014}}}, {"signalGroup":15,"state_time_speed":{"eventState":3,"timing":{"minEndTime":9014}}}, {"signalGroup":16,"state_time_speed":{"eventState":3,"timing":
{"minEndTime":9014}}}}}}}, {"receivets":1538432561,"id":59325,"message":{"header":{"protocolVersion":1,"messageID":4,"stationID":59325},"spat":{"intersections":{"id":
{"id":59325,"region":3,"revision":8,"timeStamp":43798,"status":
{"manualControlIsEnabled":0,"stopTimeIsActivated":0,"failureFlash":0,"preemptIsActive":0,"transitSignalPriorityIsActive":0,"fixedTimeOperation":0,"trafficDependentOperation":0,
standbyOperation":0,"failureMode":0,"off":0,"recentMAPmessageUpdate":0,"recentChangeInMAPAssignedLanesIDsUsed":0,"noValidMAPisAvailableAtThisTime":0,"noValidSPATisAvailableAtThi
sTime":0},"states":[{"signalGroup":1,"state_time_speed":{"eventState":3,"timing":{"minEndTime":9015}}}, {"signalGroup":2,"state_time_speed":{"eventState":6,"timing":
{"minEndTime":8956}}}, {"signalGroup":3,"state_time_speed":{"eventState":3,"timing":{"minEndTime":9015}}}, {"signalGroup":4,"state_time_speed":{"eventState":3,"timing":
{"minEndTime":9011}}}, {"signalGroup":5,"state_time_speed":{"eventState":3,"timing":{"minEndTime":9015}}}, {"signalGroup":6,"state_time_speed":{"eventState":6,"timing":
{"minEndTime":8956}}}, {"signalGroup":7,"state_time_speed":{"eventState":3,"timing":{"minEndTime":9015}}}, {"signalGroup":8,"state_time_speed":{"eventState":3,"timing":
{"minEndTime":9015}}}, {"signalGroup":9,"state_time_speed":{"eventState":3,"timing":{"minEndTime":9015}}}, {"signalGroup":10,"state_time_speed":{"eventState":3,"timing":
{"minEndTime":9015}}}, {"signalGroup":11,"state_time_speed":{"eventState":3,"timing":{"minEndTime":9015}}}, {"signalGroup":12,"state_time_speed":{"eventState":3,"timing":
{"minEndTime":9015}}}, {"signalGroup":13,"state_time_speed":{"eventState":3,"timing":{"minEndTime":9015}}}, {"signalGroup":14,"state_time_speed":{"eventState":3,"timing":
{"minEndTime":9015}}}, {"signalGroup":15,"state_time_speed":{"eventState":3,"timing":{"minEndTime":9015}}}, {"signalGroup":16,"state_time_speed":{"eventState":3,"timing":
{"minEndTime":9015}}}}}}}]
    
```

ID	Coordinate	Dist	Total Lanes	Lane Width	Signal Groups	SPAT												
2226	30.326403, -81.643490 <small>Duck's Philip Hendrick Park, Jacksonville</small>	2,115.5 mi	16	366 cm	<table border="0"> <tr> <td>2</td><td>4</td><td>6</td><td>8</td> </tr> <tr> <td>●</td><td>●</td><td>●</td><td>●</td> </tr> <tr> <td>3</td><td>5</td><td>3</td><td>5</td> </tr> </table> latency: -0.42	2	4	6	8	●	●	●	●	3	5	3	5	STOP SPAT
2	4	6	8															
●	●	●	●															
3	5	3	5															

CYBERSECURITY: SECURE TOGETHER

JTA is part of the Community & Transportation ISAO's "National Cyber Neighborhood Watch Program" to better protect ITS and other key IT systems.

C&T-ISAO technological platform:

- » Automatically identifies and manages cyber exploits
- » Provides REAL threat intelligence data that can be used to understand where agencies, smart cities, and local governments (or their vendor partners) stack up against peers.



WHO DOES JTA SHARE WITH?



- ✓ JTA shares firewall attacks with eight city governments and smart city/connected transportation programs on the C&T-ISAO's "National Neighborhood Watch Program" platform called "Secure Together."
- ✓ TOTAL events shared: 64M/day (745/sec)
- ✓ JTA events shared: 8.4M/day (97/sec)



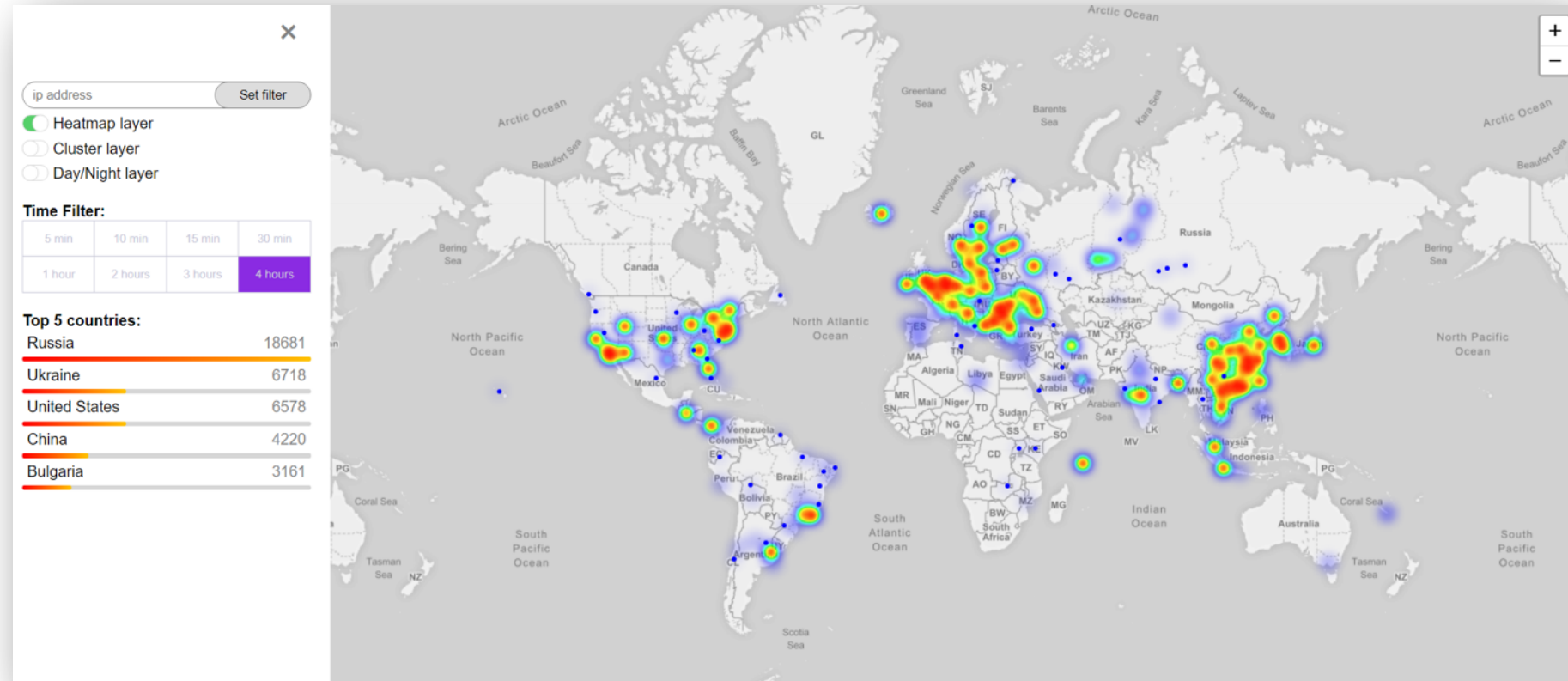
JTA METRICS CAPTURED OVER 10 CONSECUTIVE DAYS

- Where in the world the attacks are coming from
- Number of days "saved" because of knowing about attack through information sharing
- Percent of "shared attacks"



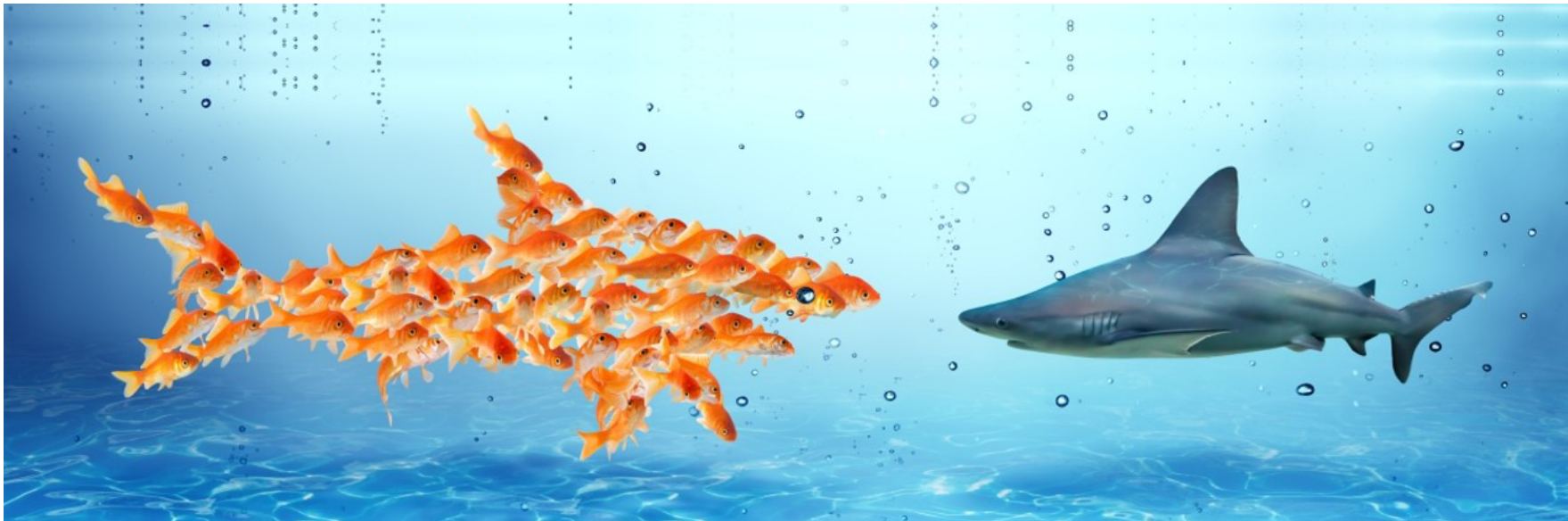
TOP FIVE ATTACK LOCATIONS OVER 10 DAYS

1. Russia: 44.8%
2. UK: 28.6%
3. Canada: 22.4%
4. Croatia: 3.4%
5. USA: 0.33%



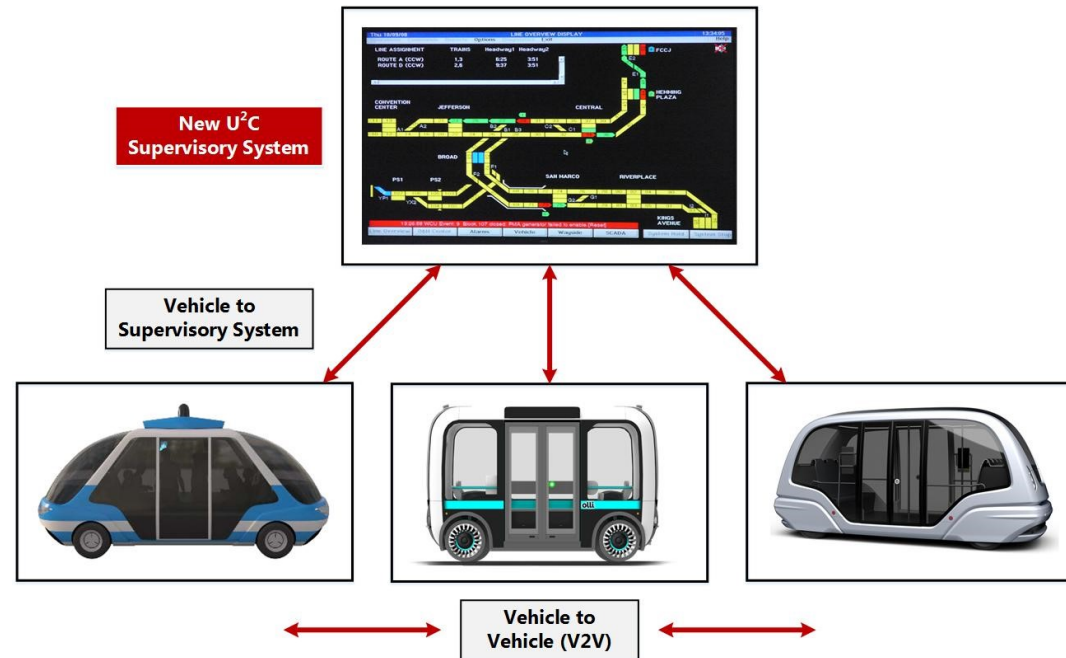
THE POWER OF INFORMATION SHARING

- **Number of days participants know of an attack before experiencing the attack because of information sharing on Secure Together: 3 days**
- **Percent of attacks that are shared by Secure Together participants: 62%**



U²C SUPERVISORY SOFTWARE SYSTEM

- » Gathering business requirements
- » Seeking input from Industry

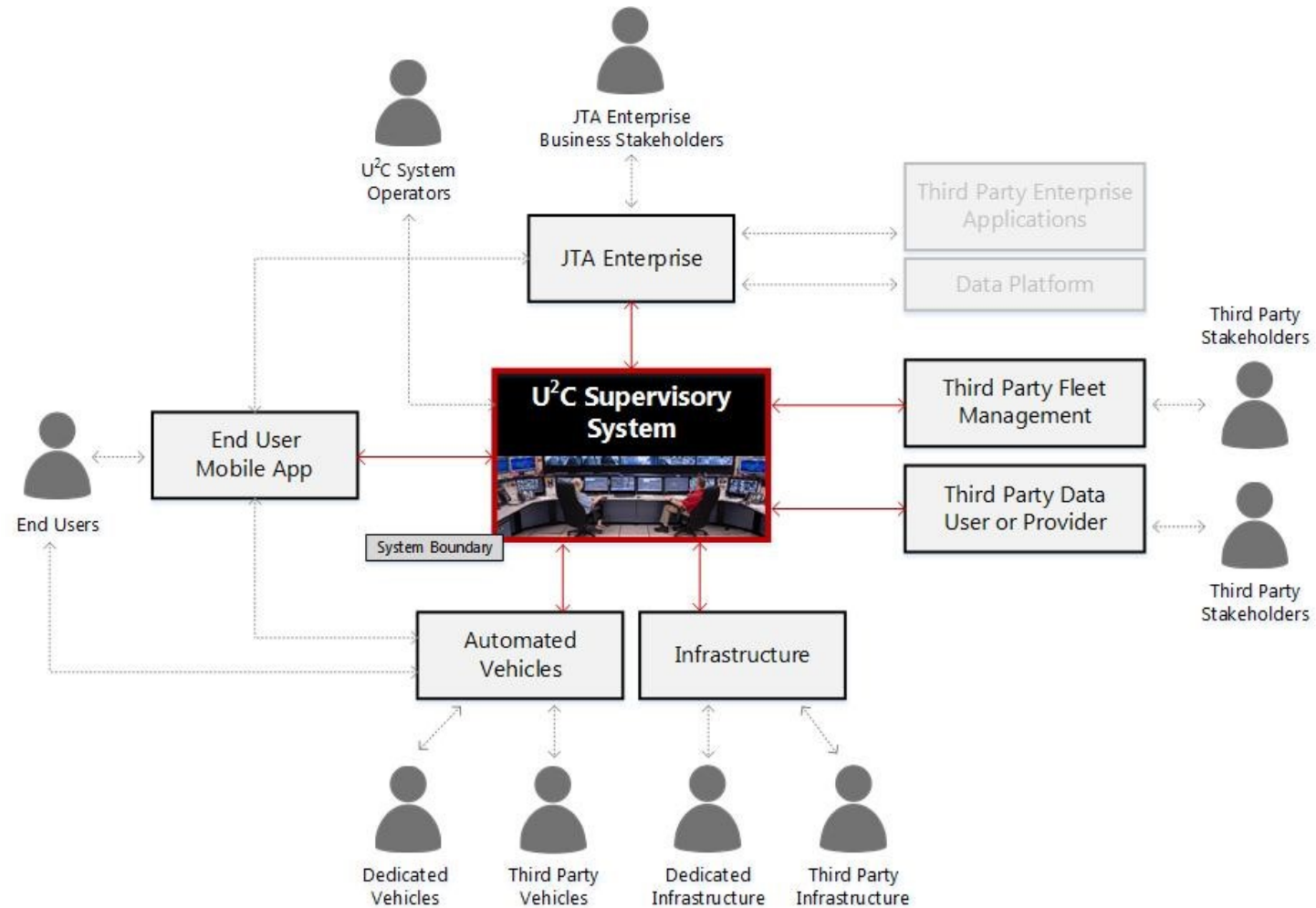


U²C SUPERVISORY SYSTEM STAKEHOLDERS

- » Customers
- » Operations & Maintenance
- » Safety & Security
- » Information Technology
- » Planning
- » Capital Programs
- » Engineering
- » Finance
- » Procurement
- » Compliance
- » Communications
- » U2C Supervisory System Operators
- » Skyway Operations
- » Automated Vehicle Provider
- » Infrastructure provider (i.e. RSU)



U²C SUPERVISORY SYSTEM ARCHITECTURE



EXAMPLE SUPERVISORY SYSTEM (SVS) BUSINESS REQUIREMENTS

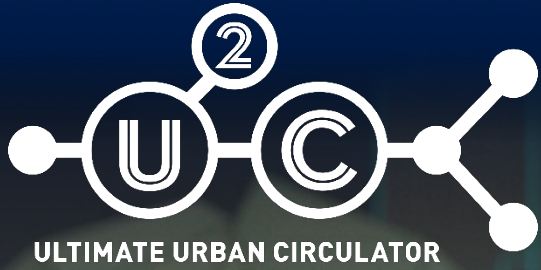
4-02.03	The U ² C SVS shall be able to interact with <u>single C/AVs</u> from <u>different manufacturers</u> using interoperable interface standards.
4-03.01	The U ² C SVS (OBE) shall be able to interact with roadside equipment (RSE) using interoperable interface standards.
3.4-01.06	The U ² C SVS shall provide End Users with service updates, including but not limited to: Wait/Arrival time, Vehicle real time location, and Vehicle visual identification (color, license plates)
3.2.7-01.05	The U ² C SVS shall provide payment verification functionality.
3.3.1-03.02	The U ² C SVS shall be able to perform traffic management, determining whether a vehicle has stopped, where, and why.
3.2.2-02.01	The U ² C SVS shall enable JTA Operations and Safety & Security personel to view on-board video cameras in real time.
3.2.4-01.02	The U ² C SVS shall be enable JTA Planning personnel to configure custom performance metrics.



QUESTIONS

U2CJAX.COM





THANK YOU

www.u2cjax.com

